

This discussion paper is/has been under review for the journal Atmospheric Measurement Techniques (AMT). Please refer to the corresponding final paper in AMT if available.

A new method for total OH reactivity measurements using a fast Gas Chromatographic Photo-Ionization Detector (GC-PID)

A. C. Nölscher¹, V. Sinha², S. Bockisch³, T. Klüpfel¹, and J. Williams¹

¹Department of Atmospheric Chemistry, Max Planck-Institute for Chemistry, Mainz, Germany

²Indian Institute of Science Education and Research Mohali, Punjab, India

³Environics-IUT GmbH, Berlin, Germany

Received: 20 April 2012 – Accepted: 2 May 2012 – Published: 15 May 2012

Correspondence to: A. C. Nölscher (a.noelscher@mpic.de)

Published by Copernicus Publications on behalf of the European Geosciences Union.

3575

Abstract

The primary and most important oxidant in the atmosphere is the hydroxyl radical (OH). Currently OH sinks, particularly gas phase reactions, are poorly constrained. One way to characterize the overall sink of OH is to measure directly the ambient loss rate of OH, the total OH reactivity. To date direct measurements of total OH reactivity have been either performed using a Laser Induced Fluorescence (LIF) system (“pump-and-probe” or “flow reactor”) or the Comparative Reactivity Method (CRM) with a Proton Transfer Reaction Mass Spectrometer (PTR-MS). Both techniques require large, complex and expensive detection systems. This study presents a feasibility assessment for CRM total OH reactivity measurements using a new detector, a Gas Chromatographic Photo-Ionization Detector (GC-PID). Such a system is smaller, more portable, less power consuming and less expensive than other total OH reactivity measurement techniques.

Total OH reactivity is measured by the CRM using a competitive reaction between a reagent (here pyrrole) with OH alone and in the presence of atmospheric reactive molecules. The new CRM method for total OH reactivity has been tested with parallel measurements of the GC-PID and the previously validated PTR-MS as detector for the reagent pyrrole during laboratory experiments, plant chamber and boreal field studies. Excellent agreement of both detectors was found when the GC-PID was operated under optimum conditions. Time resolution (60–70 s), sensitivity (LOD 3–6 s⁻¹) and overall uncertainty (25 % in optimum conditions) for total OH reactivity were equivalent to PTR-MS based total OH reactivity measurements. One drawback of the GC-PID system was the steady loss of sensitivity and accuracy during intensive measurements lasting several weeks, and a possible toluene interference. Generally, the GC-PID system has been shown to produce closely comparable results to the PTR-MS and thus in suitable environments (e.g. forests) it presents a viably economical alternative for groups interested in total OH reactivity observations.

3576

1 Introduction

The hydroxyl radical (OH) is the most effective oxidant in the atmosphere. Due to its high reactivity, OH is thought to act as a cleaning agent, initiating the photochemical processes leading to removal of chemicals from the atmosphere. The tropospheric OH radical budget has been analyzed in several atmospheric studies via simultaneous measurements of OH sources (photolysis of ozone (O₃), formaldehyde (HCHO), nitrous acid (HONO), e.g. Logan et al., 1981; Mahajan et al., 2011; Kleffmann et al., 2005), the in-situ OH concentration using Laser Induced Fluorescence (LIF), Chemical Ionization Mass Spectrometry (CIMS) or Differential Optical Laser Absorption Spectroscopy (DOAS), (Schlosser et al., 2009) and the sum of all OH sinks (total OH reactivity). The total OH reactivity is the total loss rate of OH due to all atmospheric OH reactive species (Di Carlo et al., 2004). This total sink has proven most difficult to constrain and direct measurements of total OH reactivity have become an important and much coveted technique for studying atmospheric chemistry.

As a direct approach for the total sink of OH, total OH reactivity measurements help to understand the role of various sinks and sources that balance the OH budget (Martinez et al., 2003). Furthermore the relative contribution of various reactive volatile organic compounds (VOCs) to the total loss rate of OH may be examined (Lou et al., 2010; Sinha et al., 2010; Kato et al., 2011). By comparing the OH reactivity contribution from individually measured compounds, model results and the measured total OH reactivity, completeness of measured species can be investigated. Unknown or unmeasured constituents may play an important role in tropospheric OH and ozone budgets (e.g. Di Carlo et al., 2004; Mao et al., 2010; Sinha et al., 2012).

Total OH reactivity measurements are currently performed with three methods which are described below and summarized in Table 1.

The first direct measurements of atmospheric total OH reactivity were carried out by Calpini et al. (1999) and Jeanneret et al. (2001). Later the “pump-and-probe” technique was improved by Sadanaga et al. (2004). In this configuration, a pump laser

3577

photolyzes ozone to produce artificially high OH. Due to the reaction with reactive atmospheric molecules the OH decays. The rate of decay is detected by Laser Induced Fluorescence (LIF) and can be used to derive the lifetime of atmospheric OH, hence the total OH reactivity. The “pump-and-probe” LIF is capable of operating fast (30–180 s averaging time), with a detection limit of $1\text{--}2\text{ s}^{-1}$, and an overall uncertainty of 10–12 % (Sadanaga et al., 2004; Lou et al., 2010).

Kovacs and Brune (2001) reported a second method to directly monitor the total OH reactivity which was also based on LIF, but employed a different system of generating OH namely a discharge flow technique. In the first step OH is produced by a mercury UV lamp in a movable inlet and injected into a large flow-tube. After mixing with ambient air, OH is analyzed downstream using LIF. Then, the injector is pulled back in multiple steps. Due to longer mixing- and hence longer reaction-times the detected OH concentrations change. Observing the decay of OH at different reaction times, allows the determination of the overall loss rate of OH down to a detection limit of 1 s^{-1} within a time resolution of 210 s. The uncertainty for this technique is roughly 16–25 % (Kovacs and Brune, 2001; Mao et al., 2010).

A third method, proposed by Sinha et al. (2008), uses a competitive reaction of artificially produced OH radicals with a reagent which is not present in ambient air and all OH reactive atmospheric species. The Comparative Reactivity Method (CRM) compares the reagent’s mixing ratio after reacting with OH in zero air and in the presence of ambient air. A suitable detector is used to measure the mixing ratio of the reagent before and after the competitive reactions. Different combinations of reagent and detector can be chosen for the CRM according to the required instrumental characteristics. In the current CRM based instruments under atmospheric conditions pyrrole functions as the reagent and a PTR-MS (IONICON, Austria) as the detector. Using a PTR-MS for total OH reactivity measurements provides a time resolution of 10–60 s, sensitivity down to $3\text{--}4\text{ s}^{-1}$ detection limit, overall relative uncertainty of 16–20 % and good stability (Sinha et al., 2012; Nölscher et al., 2012). However, the PTR-MS instrument is big (650 × 1660 × 550 mm), heavy (150 kg) and expensive (ca. 180 000 €). For field

3578

measurements it would be desirable to use a small, more portable and less expensive measurement device in order to make the total OH reactivity measurement accessible to more practitioners.

The potential of a custom built GC-PID (VOC-Analyzer from IUT-Berlin, now Envionics-IUT GmbH) for total OH reactivity measurements using CRM is assessed in this study. The GC-PID is small (260 × 160 × 400 mm), light (8 kg), provides a good time resolution (60–70 s) and is less expensive (18 000 €). It requires no external carrier gas, and an internal battery provides power for ca. 12 h making it suitable for field campaigns. The detection limit for pyrrole is 3 ppb, and total OH reactivity can be measured under best conditions down to 3 s^{-1} (6 s^{-1} worst case, see Sect. 3.3). The new GC-PID set-up has been tested in parallel to previously validated PTR-MS measurements for CRM in laboratory experiments, a plant chamber, and boreal forest field studies (Sect. 3.2). Advantages and drawbacks of the new technique are discussed.

2 Experimental

2.1 The Comparative Reactivity Method – basic principle

Total OH reactivity measurements by the Comparative Reactivity Method (CRM) are based on the competitive reaction between OH and a reagent, which is not present in ambient air, and atmospheric OH reactive compounds. The reagent is introduced into a Teflon coated glass reactor, diluted with zero-air and quantified with a suitable detector (concentration level C1). Next, OH molecules are generated by photolyzing water-vapor with a pen-ray mercury UV lamp and introduced into the reactor. The reaction of the reagent with OH decreases the amount of detectable molecules leading to a second concentration level (C2). By exchanging zero-air with ambient air multiple other OH reactive molecules are introduced into the reactor and these compete with the reagent for the OH present. This results in a concentration change (concentration level C3) which depends on the OH reactivity of the atmospheric composition. The

3579

following equation provides the total OH reactivity of air R_{air} (Sinha et al., 2008).

$$R_{\text{air}} = C1 \times k_{R+\text{OH}} \times \frac{(C3-C2)}{(C1-C3)} \quad (1)$$

Where C1, C2, C3 are the different concentration levels and $k_{R+\text{OH}}$ is the reaction rate coefficient of the reagent with OH. For ambient measurements a range of total OH reactivity from 0 to 100 s^{-1} (unpolluted) and 200 s^{-1} (polluted) has been measured (Shirley et al., 2006; Lou et al., 2010). In this range pyrrole ($\text{C}_4\text{H}_5\text{N}$) acts as suitable reagent molecule. It's reaction rate coefficient to OH is comparable to many atmospheric constituents. The exact value has recently been measured by Dillon et al. (2012) and found to be weakly temperature and pressure dependent. For a more precise examination in a low-OH reactivity environment another reagent, which reacts more slowly with OH, could be used. Typical mixing ratios of pyrrole before the reaction with OH are 30–100 ppbV, after the reaction 10–30 ppbV depending on flow rates, humidity and intensity of the UV lamp. This corresponds to an OH field in the reactor of ca. $10^{12} \text{ molecules cm}^{-3}$. The ratio of pyrrole to OH usually ranges from 1.7 to 3.0.

To calculate the total OH reactivity from the different measurement steps, each concentration level needs to be evaluated. Hysteresis effects (switching valves, time delays between C2 and C3), changing sensitivity, different humidity levels in C2 and C3 (different OH concentrations), the assumption of pseudo-first order conditions (Sinha et al., 2008), possible NO interferences (Dolgorouky et al., 2012) and dilution are accounted for in the calculation. The uncertainty of CRM measurements is calculated through a propagation of errors and depends on the uncertainty of the reagent's gas mixture, the error of the rate coefficient, the flow variations, and the detector's uncertainty.

2.2 Proton Transfer Reaction Mass Spectrometer (PTR-MS) measurements for CRM

In situ ambient measurements of total OH reactivity using CRM require a precise, stable, and reasonably fast detector with good linearity over the measurement range.

3580

Thus, in its first configuration, total OH reactivity was measured by CRM as described above using PTR-MS (Sinha et al., 2008). This detector offers a fast response, reasonably precise measurements and an indication of water levels in the analyzed gases (which is helpful for ambient, hence humid measurements). The PTR-MS has been applied in various fields of scientific and industrial interest (Lindinger et al., 1998; de Gouw et al., 2004; Blake et al., 2009).

The basic principle can be described as follows: A hollow-cathode discharge source generates H_3O^+ ions from water vapor, which are introduced into a drift tube and mixed with the air sample. Proton transfer from the H_3O^+ to the gas molecules of interest occurs for compounds with higher proton affinity than water. The instrument is thus blind to N_2 and O_2 , the main constituents of the atmosphere, but detects a wide range of organic compounds. Proton transfer is a relatively soft ionization method which limits the fragmentation of ions. In the drift tube an electric field accelerates the positive ions through the gas mixture. The operating pressure within the drift tube is typically 2.2 mbar and the total voltage across the drift tube 600 V. A quadrupole mass spectrometer separates ions according to their protonated mass to charge (m/z) ratios and a secondary electron multiplier detects them.

For total OH reactivity measurements the protonated reagent pyrrole is detected on m/z 68. In addition, primary ions H_3O^+ , water clusters, markers for impurities (such as oxygen [m/z 32], methanol [m/z 33] and acetone [m/z 59]) and for noise (such as [m/z 24]) are monitored. An accurate calibration for pyrrole is needed not only in dry but also for humid air. It is known that the sensitivity of the PTR-MS varies for several compounds with humidity. Sinha et al. (2009) reported that the PTR-MS response to pyrrole is weakly dependent on the water concentration. Its sensitivity increases with relative humidity up to 30%, but for higher relative humidities the sensitivity of the PTR-MS to pyrrole remains reasonably constant. Since total OH reactivity measurements are deployed for variably humid ambient air, the sensitivity dependence on humidity needs to be determined through calibration beforehand and applied during data-analysis.

3581

Using the PTR-MS as a detector provides measurement points with a time resolution between 10–60 s and a limit of detection of $3\text{--}4\text{ s}^{-1}$ for total OH reactivity. This was calculated as 2σ of the C2 noise and tested empirically by introducing known OH reactivities to the system. CRM measurements use relatively high levels of pyrrole (10 ppbV–100 ppbV), so the absolute sensitivity towards the pyrrole signal is not crucial. More important is the signal to noise ratio and the stability of the detected concentrations levels (C1, C2, C3) which are compared to each other for the calculation (Eq. 1).

2.3 A new detector for CRM total OH reactivity measurements: a Gas Chromatographic Photo-Ionization Detector (GC-PID)

A custom-built GC-PID system (VOC-Analyzer from IUT-Berlin, now Environics-IUT GmbH) for total OH reactivity measurements has been developed to measure the mixing ratio of pyrrole comparable in quality and quantity to those obtained by PTR-MS.

The instrument operates as follows: a small sampling pump continuously draws air through a water-filter into the system (50–250 sccm). For analysis a sample is swept through a short capillary GC column to separate the various volatile organic compounds (VOCs) and water. In the detection cell the separated molecules are selectively ionized by UV light (e.g. aromatics, alkenes). Ions are formed and accelerated to a collector electrode by a weak electric field. In this system the ambient air itself acts as carrier gas eliminating the need for compressed gases. Column, valves and the detector are situated in a temperature controlled box. One chromatogram is generated, monitored and automatically saved every 60–70 s. The instrument records the raw signal of the chromatogram as well as a calibrated value in ppbV using the peak height and a previously determined calibration factor. The peak area was analyzed offline using a custom-made IDL software provided courtesy of the University Frankfurt (“IAU chrom”) which fits Gaussian curves to the peak and integrates the area of this Gaussian fit. Given an accurate calibration for pyrrole, the mixing ratio can be reliably determined from the peak area.

3582

A typical chromatogram is presented in Fig. 1. An offset of 500–2000 counts was observed, which depended on the condition of the instrument. The retention time of pyrrole ranged between 1300–2000 in the given units (corresponding to 45–55 s). When operating in ambient air additionally a water peak was found at 500–1000 a.u. retention time. This peak was inverted with respect to pyrrole and needs to be well separated from the pyrrole peak.

Many other chemicals are in principle detectable by the GC-PID. These include toluene, benzene and acetone, all of which are common compounds of ambient air. Because of the fast sampling and the relatively short chromatogram, the separation is not perfect and substances besides pyrrole can potentially interfere within the same retention time window. As can be seen in Fig. 2, four substances show clear peaks: acetone, benzene, toluene and pyridine. Other compounds such as monoterpenes, methanol and a xylene-mixture did not show peaks in the analyzed sample. To identify the peak positions as shown in Fig. 2 head space of the pure liquid compounds, hence extremely high levels, were introduced to the instrument.

For total OH reactivity measurements the pyrrole retention time window needs to be free of significant interferences. Atmospheric interference candidates are toluene (ambient concentrations 0.1–1 ppbV), since its retention time overlaps with pyrrole, or pyrrole itself when being emitted by biomass burning (Karl et al., 2007). It is worth noting that pyrrole concentrations for CRM measurements are significantly higher (see Sect. 2.1). If necessary a background correction can be easily made by alternating between ambient measurements (without introducing pyrrole to the system) and total OH reactivity measurements. This assumes that the interference species does not vary significantly between the background tests.

Two calibration plots for pyrrole are given in Figs. 3 and 4. For both calibrations good linearity could be found, the fit-quality R^2 is almost 1. The linear fit provides a slope which is a proxy for the sensitivity of the instrument and an offset which is caused by the level of noise. Standard tests have shown that pyrrole mixing ratios down to 3 ppbV are detectable by the instrument, when it is running in optimum conditions (e.g. as was

3583

for Fig. 3). This is sufficient for CRM measurements where pyrrole is expected in the range of 10–100 ppbV.

For ambient, hence humid air the instrument must provide the same linear performance in pyrrole detection as for dry conditions (as in Fig. 3). The characteristic water peak (Fig. 1) drives the signal negative at a retention time of 500–1000 a.u. and has the potential to drag down the baseline which is used to fit the pyrrole peak. In such cases the integrated peak area of pyrrole could be overestimated. This can be seen in Fig. 3 where two additional calibration points were recorded in humid conditions. For a relative humidity of 27 % the integrated peak area was increased by 12 %. To correct the humidity dependency, a factor can be determined through calibration beforehand. The problem can be avoided when lengthening the chromatographic separation, which improves the division of water and pyrrole but lowers the sampling frequency.

During an intensive field campaign frequent calibrations proved, that over several (ten) days the sensitivity of the instrument did not change much. The GC-PID was started in optimal conditions and ran non-stop for ambient measurements. As can be seen from Fig. 4, a repetition of pyrrole calibration after five days matches exactly the previous results (less than 10 % deviation of the first calibration), while after ten days the sensitivity has slightly decreased (deviation of 35 %). Sensitivity can possibly be lost because of two reasons: (1) the water-filter loses its efficiency with time, (2) the PID window gets coated by photopolymerizing pyrrole (Cruz et al., 1999; Yang and Lu, 2005) weakening the ionization efficiency. Decreasing sensitivity can be compensated by extending averaging times for a while. However, after ca. 2 months intensive measurements the instrument needed maintenance such as changing filters and a cleaning of the PID window to remain operational.

2.4 Modifications to the CRM-set-up

Since the original publication of the CRM method, a number of design improvements have been realized. Figure 5 presents a schematic of the current operated CRM set-up.

3584

A process controlling device (V25) switches automatically between different concentration levels (C1, C2, C3). Pyrrole is introduced directly before the reactor into the air stream which either provides clean air for baseline measurements (C2) or ambient air (C3). To produce OH another arm to the reactor contains a pen-ray mercury UV lamp (184.9 nm) which is sheathed in a flow of either dry (no OH production, e.g. C1) or humidified nitrogen (OH production, e.g. C2 or C3).

One major change to the original set-up (Sinha et al., 2008) is the position of the sampling pump (Pump). It is now installed downstream of the reactor, and draws ambient air samples into the reactor without passing through a pump beforehand. This avoids possible total OH reactivity loss in the pump. Thus ambient air is introduced unperturbed into the system and reacts with the generated OH. Downstream of the reactor, only the quantification of the pyrrole mixing ratio is necessary for total OH reactivity measurements. The Teflon pump which is used here has been proven to not affect the amount of pyrrole led through it.

These changes cause the reactions to proceed at slightly lower pressure in the reactor than ambient (1–4 hPa lower). Therefore it has to be ascertained that for all concentration levels (C1, C2, C3) the same pressure and flow conditions inside the reactor are given. In Fig. 5 it can be seen, that a three-way-valve (Teflon) upstream of the reactor provides clean air (C2) or the ambient sample (C3). Both, the pump controlling the inlet flow (Pump C3) and another pump at the zero-air side (Pump C2), have to be adjusted carefully in order to provide the same pressure and flow through the reactor for all concentration levels. The inlet flow of the CRM can be chosen in a range between 350 sccm (chamber measurements) and 5000 sccm (fast flushing inlets).

To avoid humidity effects in the reactor, meaning different water concentrations in measurements (C3) and baseline (C2) leading to different OH concentrations, a catalytic converter (CAT) was used to generate zero air with ambient humidity levels. The catalytic converter effectively transformed ambient molecules to corresponding oxides, e.g. CO_2 and H_2O . The resulting water was minor in comparison to ambient air levels. A sensor for humidity (RH) in the exhaust and the PTR-MS water signal (e.g. m/z

3585

37) showed equal humidity levels for both C2 and C3 measurements (for not too rapid changes). The scrubbing efficiency was found to be high for all operating conditions.

Temperature and pressure have been monitored and applied in the total OH reactivity calculations afterwards.

As in the original set-up, short Teflon lines and Teflon valves were implemented. In addition the glass reactor was coated with Teflon, to minimize surface induced hysteresis of humidity and pyrrole levels. The Teflon coating also minimizes the loss of OH reactive species to the walls of the reactor. The lines providing pyrrole from the gas standard (10.1 ppmV in Nitrogen) were shielded from light in order to avoid photolytic loss.

Overall 330 sccm were pumped through the reactor, including 100 sccm Nitrogen and 1.8 sccm pyrrole. Under these conditions the reactor mixture contained 70 % of the ambient air sample, which optimized the CRM for operation in relatively clean, biogenic environments.

3 Results

Parallel measurements of PTR-MS and GC-PID as detector for CRM total OH reactivity observations were carried out in the laboratory, the Finnish boreal forest and a plant chamber. The instruments' limitations and advantages were revealed through comparison under different conditions. As visual intercomparison both detectors are pictured in Fig. 6.

3.1 Standard measurements

To verify the reliability of the two detector systems for CRM total OH reactivity measurements, standard tests were conducted in a series of laboratory and field experiments spanning over one year. The calibration gases employed for determination of OH reactivity were propane and propene (32890 ppbV, 596 ppbV, respectively) in Nitrogen.

3586

Both were diluted in zero air and individually introduced into the reactor of the system. Comparing the theoretically expected OH reactivity and the measured OH reactivity established that both methods generated reasonable and comparable results. Figure 7 compares the response of the two detectors in a OH reactivity range from 3–30 s⁻¹.
5 A linear regression gives a slope of $m = 0.92$ and a low offset, which is smaller than the limit of detection for both instruments. Both detectors show very good correlation to each other, hence agree in the measured total OH reactivity from standard measurements.

3.2 Field measurements – HUMPPA-COPEC 2010

10 In summer 2010 an intensive field measurement campaign (HUMPPA-COPEC 2010) at the Finnish boreal forest station SMEAR II in Hyytiälä took place in order to characterize direct biogenic emissions and photochemical reaction products in the gas-phase as well as the particulate phase. A detailed description of the field site, instruments and an overview of some results can be found in Williams et al. (2011). During this campaign
15 the CRM was implemented to monitor total OH reactivity at two different heights (in and above the forest canopy). These results are presented in Nölscher et al. (2012). The HUMPPA-COPEC campaign in summer 2010 provided an excellent opportunity for the first intensive tests within a field campaign of the GC-PID in parallel with a PTR-MS as detector for total OH reactivity measurements.

20 Since the measurement site was surrounded by boreal forest, little toluene-interference was expected as toluene is thought to be predominantly anthropogenically emitted. Nevertheless frequent tests without pyrrole were performed but did not show any significant enhanced background within the pyrrole retention window. Even during the influence of an aged biomass burning plume no pyrrole or pyrrole interfering
25 peak could be detected (Sect. 2.3). Furthermore, independent ambient PTR-MS measurements made in parallel showed extremely low toluene mixing ratios (less than 0.4 ppbV) and no evidence for pyrrole either. Figure 8 presents a comparison of the directly measured total OH reactivity inside the canopy for both instruments at the end

3587

of the campaign (7 August 2010–8 August 2010). The GC-PID was operated in optimal conditions after a break for maintenance during the campaign, meaning a re-newed water-filter and a brand new detector. In this manner, good time resolution and sensitivity could be achieved. The PTR-MS ran stably for the four week intensive field
5 campaign. The two data-sets have been handled equivalently and averaged to 5 min values. The typical relative uncertainty for total OH reactivity measured with GC-PID in this campaign was 25 %, whereas the PTR-MS uncertainty was 16 %. These values are calculated through a propagation of errors: Three of the four parameters contributing to the measurement uncertainty are the same for both detectors (uncertainty of the reagent's gas mixture (5 %), error of rate coefficient (14 %), flow variations (2 %)).
10 The instrumental error derived as standard deviation of the averaged noise is for PTR-MS results 5 %, and for the GC-PID 20 %. Both instruments operated with the same detection limit of 3 s⁻¹, which is the 2 σ of the baseline (C2) noise during total OH reactivity measurements.

15 Generally PTR-MS and GC-PID values agree well with each other within the observed total OH reactivity levels from the limit of detection up to 40 s⁻¹. This can also be seen in Fig. 9 which presents the correlation and a linear fit of the 5 min averaged data from PTR-MS and GC-PID for total OH reactivity. The linear least squares fit shows good agreement between the two detectors with a slope of $m = 0.93$. The offset
20 of the linear fit lies within the error. The quality of the correlation, given by Pearson R, is close to 1. Hence, both instruments were able to detect total OH reactivity using CRM and were in good agreement. Moreover the instruments operated at comparable time resolution, detection limit, and sensitivity.

3.3 Plant chamber measurements

25 The same set-up as deployed in the HUMPPA-COPEC 2010 campaign was operated at the Jülich Plant Atmospheric Chamber (JPAC) in September 2010. The total OH reactivity system was installed at the plant chamber facility to examine primary boreal tree emissions under controlled conditions. Figure 10 shows the results of both

3588

detectors' measured total OH reactivity, averaged to 5 min (PTR-MS) and 15 min (GC-PID) in a range of 15 s^{-1} down to the limit of detection. The plant emissions show a weak diel variation in total OH reactivity and overall low levels, which are for most points below 8 s^{-1} . Because of decreased sensitivity, lower offset and higher noise the GC-PID results had to be averaged over a longer time period, and lost therefore in time resolution. Still the GC-PID results fluctuate more, but show the same overall trend as PTR-MS measurements. The detection limit of the GC-PID for these measurements was 6 s^{-1} , compared to 4 s^{-1} detection limit of the PTR-MS total OH reactivity measurements. Again the limit of detection was calculated as the 2σ of the baseline (C2) noise. The GC-PID showed a less sensitive response to pyrrole when compared to previous conditions. Directly after maintenance with a new water-filter system (6 August 2010, Finland) the conversion factor of peak area to pyrrole mixing ratio was $289.04\text{ peak area ppbV}^{-1}$, while after one month (9 September 2010) in Jülich it decreased to $276.89\text{ peak area ppbV}^{-1}$. Because of a more noisy signal the overall uncertainty for the plant chamber results was 46 % for the GC-PID. After one month intensive field measurements in Finland during the HUMPPA-COPEC campaign, shipping and re-installation the plant chamber experiments present a worst case study for the new GC-PID detector.

The correlation (Fig. 11) of both detectors is more scattered and the Pearson R coefficient shows positive but not strong correlation ($R = 0.51$). A linear regression fit has a slope of 1.01 but is not of good quality. This is mainly because of the generally low level of detectable total OH reactivity and less optimized conditions of the GC-PID. When examining the instrument subsequently of the campaign a layer on the detection PID window was observed and removed by cleaning. With time pyrrole polymerized due to UV radiation at the detection PID window, blocked transmission and hence ionization. The instrument lost sensitivity and noise increased. After the cleaning the GC-PID operated again with improved sensitivity and accuracy.

3589

4 Discussion and comparison

A new detector for total OH reactivity measurements, a GC-PID, using CRM was tested under various (optimum and worst case) conditions. In general, the previously validated PTR-MS results and the new GC-PID measurements showed excellent agreement for standard tests and field observations within the boreal forest (HUMPPA-COPEC 2010). For the plant chamber experiments acceptable correlation was found. Decreasing sensitivity and accuracy in the GC-PID instrument were identified to be caused by polymerizing pyrrole at the detection PID window.

Table 2 summarizes technical and operational advantages and disadvantages of both instruments. When compared to the PTR-MS, the GC-PID is a smaller, lighter and less expensive instrument. The inlet flows for both instruments are adjustable and comparable. Both systems show slight humidity dependent sensitivity. This has been well characterized by Sinha et al. (2009) for the PTR-MS and so the measurements can be corrected. Calibrating with humid and dry air also provides a correction factor for GC-PID ambient (wet) measurements. For a good separation between the water and pyrrole peaks, the GC-PID results are not influenced by water. Lengthening the chromatogram improves the separation but reduces the sampling frequency unless multiple detectors are used asynchronously.

The second part of Table 2 highlights details of the application as detector for total OH reactivity measurements. The overall uncertainty is lower in the PTR-MS and it also shows good stability over long periods of measurement. The time resolution of the PTR-MS raw signal can be very short, i.e. only 10 s (when focusing on only a few detected masses). In most applications it is averaged to 1 to 5 min. With this time resolution the limit of total OH reactivity detection is $3\text{--}4\text{ s}^{-1}$ for PTR-MS. Compared to this, under optimum conditions, the GC-PID reaches the same detection limit and time resolution, but has a higher overall uncertainty (25 %). With less well optimized conditions, which can be expected when running the instrument continuously over several

3590

weeks, the uncertainty increases sharply (46 %) as well as the detection limit (6 s^{-1}). Then a longer averaging time is needed to gain reasonable accuracy.

It should be noted that direct biomass burning emissions (Warneke et al., 2011), urban emissions (Fortner et al., 2009) and some biogenic emissions (White et al., 2009) could effect total OH reactivity measurements using GC-PID due to high and variable toluene emissions which may interfere on the pyrrole retention window. Under such conditions regular background determinations would be necessary with the same (or a second GC-PID), detracting from the measurement frequency (or doubling the costs). The boreal forest environment appears to be suitable for GC-PID determined total OH reactivity. This is in contrast to LIF techniques which have recently reported serious concerns in the OH measurement (Mao et al., 2012). It remains to be determined whether this also impacts LIF OH reactivity results. Since the GC-PID coupled CRM is a small and light instrument, even airborne related total OH reactivity measurements could be possible in the future.

Deploying the GC-PID as detector for direct total OH reactivity measurements using CRM offers a robust, portable and less expensive alternative to PTR-MS measurements. Under optimized conditions very good agreement between both instruments could be examined. A technically improved version of the prototype GC-PID should also ensure that the detector provides good sensitivity for a long time, it is easy to handle and maintain regularly, and interferences with water and toluene diminish. This makes the GC-PID a potentially useful method for total OH reactivity measurements in field studies.

Acknowledgements. We thank the IAU Team (Andreas Engel, Harald Bönisch, Stephan Sala) for providing the peak integration software, and the Jülich JPAC Team (Jürgen Wildt, Astrid Kiendler-Scharr) who hosted the plant chamber measurements. The entire HUMPPA-COPEC team is grateful for the support of the Hyytiälä site engineers and staff. Support of the European Community – Research Infrastructure Action under the FP6 “Structuring the European Research Area” Programme, EUSAAR Contract No. RII3-CT-2006-026140 is gratefully acknowledged.

30

3591

The service charges for this open access publication have been covered by the Max Planck Society.

References

- Blake, R. S., Monks, P. S., and Ellis, A. M.: Proton-transfer reaction mass spectrometry, *Chem. Rev.*, 109, 861–896, doi:10.1021/cr800364q, 2009. 3581
- Calpini, B., Jeanneret, F., Bourqui, M., Clappier, A., Vajtai, R., and van den Bergh, H.: Direct measurement of the total reaction rate of OH in the atmosphere, *Analisis*, 27, 328, doi:10.1051/analisis:1999270328, 1999. 3577
- Cruz, G., Morales, J., and Olayo, R.: Films obtained by plasma polymerization of pyrrole, *Thin Solid Films*, 342, 119–126, doi:10.1016/S0040-6090(98)01450-3, 1999. 3584
- de Gouw, J., Warneke, C., Holzinger, R., Klüpfel, T., and Williams, J.: Inter-comparison between airborne measurements of methanol, acetonitrile and acetone using two differently configured PTR-MS instruments, *Int. J. Mass Spectrom.*, 239, 129–137, doi:10.1016/j.ijms.2004.07.025, 2004. 3581
- Di Carlo, P., Brune, W. H., Martinez, M., Harder, H., Leshner, R., Ren, X., Thornberry, T., Carroll, M. A., Young, V., Shepson, P. B., Riemer, D., Apel, E., and Campbell, C.: Missing OH reactivity in a forest: evidence for unknown reactive biogenic VOCs, *Science*, 304, 722–725, doi:10.1126/science.1094392, 2004. 3577
- Dillon, T., Tucceri, M., Dulitz, K., Horowitz, A., Vereecken, L., and Crowley, J.: Reaction of hydroxyl radicals with $\text{C}_4\text{H}_5\text{N}$ (pyrrole): temperature and pressure dependent rate coefficients, *J. Phys. Chem.*, in press, doi:10.1021/jp211241x, 2012. 3580
- Dolgorouky, C., Gros, V., Sarda-Esteve, R., Sinha, V., Williams, J., Marchand, N., Sauvage, S., Poulain, L., Sciare, J., and Bonsang, B.: Total OH reactivity measurements in Paris during the 2010 MEGAPOLI winter campaign, *Atmos. Chem. Phys. Discuss.*, 12, 10937–10994, doi:10.5194/acpd-12-10937-2012, 2012.
- Fortner, E. C., Zheng, J., Zhang, R., Berk Knighton, W., Volkamer, R. M., Sheehy, P., Molina, L., and André, M.: Measurements of Volatile Organic Compounds Using Proton Transfer Reaction – Mass Spectrometry during the MILAGRO 2006 Campaign, *Atmos. Chem. Phys.*, 9, 467–481, doi:10.5194/acp-9-467-2009, 2009. 3591

3592

- Jeanneret, F., Kirchner, F., Clappier, A., von den Bergh, H., and Calpinin, B.: Total VOC reactivity in the planetary boundary layer 1. Estimation by a pump and probe OH experiment, *J. Geophys. Res.*, 106, 3083–3093, 2001. 3577
- Karl, T. G., Christian, T. J., Yokelson, R. J., Artaxo, P., Hao, W. M., and Guenther, A.: Tropical Forest and Fire Emissions Experiment: method evaluation of volatile organic compound emissions measured by PTR-MS, FTIR, and GC from tropical biomass burning, *Atmos. Chem. Phys.*, 7, 5883–5897, doi:10.5194/acp-7-5883-2007, 2007. 3583
- Kato, S., Sato, T., and Kajii, Y.: A method to estimate the contribution of unidentified VOCs to OH reactivity, *Atmos. Environ.*, 45, 5531–5539, doi:10.1016/j.atmosenv.2011.05.074, 2011. 3577
- Kleffmann, J., Gavriloaiei, T., Hofzumahaus, A., Holland, F., Koppmann, R., Rupp, L., Schlosser, E., Siese, M., and Wahner, A.: Daytime formation of nitrous acid: a major source of OH radicals in a forest, *Geophys. Res. Lett.*, 32, L05818, doi:10.1029/2005GL022524, 2005. 3577
- Kovacs, T. A. and Brune, W.: Total OH loss rate measurement, *J. Atmos. Chem.*, 39, 105–122, 2001. 3578
- Lindinger, W., Hansel, A., and Jordan, A.: On-line monitoring of volatile organic compounds at pptv levels by means of Proton-Transfer-Reaction Mass Spectrometry (PTR-MS): medical applications, food control and environmental research, *Int. J. Mass Spectrom.*, 173, 191–241, doi:10.1016/S0168-1176(97)00281-4, 1998. 3581
- Logan, J., Prather, M., Wofsy, S., and McElroy, M.: Tropospheric chemistry: a global perspective, *J. Geophys. Res.*, 86, 7210–7255, 1981. 3577
- Lou, S., Holland, F., Rohrer, F., Lu, K., Bohn, B., Brauers, T., Chang, C.C., Fuchs, H., Häsel, R., Kita, K., Kondo, Y., Li, X., Shao, M., Zeng, L., Wahner, A., Zhang, Y., Wang, W., and Hofzumahaus, A.: Atmospheric OH reactivities in the Pearl River Delta – China in summer 2006: measurement and model results, *Atmos. Chem. Phys.*, 10, 11243–11260, doi:10.5194/acp-10-11243-2010, 2010. 3577, 3578, 3580
- Mahajan, A., Whalley, L., Kozlova, E., Oetjen, H., Mendez, L., Furneaux, K., Goddard, A., Heard, D., Plane, J., and Saiz-Lopez, A.: DOAS observations of formaldehyde and its impact on the HO_x balance in the Tropical Atlantic marine boundary layer, *J. Atmos. Chem.*, 66, 167–178, doi:10.1007/s10874-011-9200-7, 2011. 3577
- Mao, J., Ren, X., Chen, S., Brune, W., Chen, Z., Martinez, M., Harder, H., Lefer, B., Rappenglück, B., Flynn, J., and Leuchner, M.: Atmospheric oxidation capacity in the summer

3593

- of Houston 2006: comparison with summer measurements in other metropolitan studies, *Atmos. Environ.*, 44, 4107–4115, doi:10.1016/j.atmosenv.2009.01.013, 2010. 3577, 3578
- Mao, J., Ren, X., Brune, W. H., Van Duin, D. M., Cohen, R. C., Park, J.-H., Goldstein, A. H., Paulot, F., Beaver, M. R., Crouse, J. D., Wennberg, P. O., DiGangi, J. P., Henry, S. B., Keutsch, F. N., Park, C., Schade, G. W., Wolfe, G. M., and Thornton, J. A.: Insights into hydroxyl measurements and atmospheric oxidation in a California forest, *Atmos. Chem. Phys. Discuss.*, 12, 6715–6744, doi:10.5194/acpd-12-6715-2012, 2012. 3591
- Martinez, M., Harder, H., Kovacs, T., Simpas, J., Bassis, J., Leshner, R., Brune, W., Frost, G., Williams, E., Stroud, C., Jobson, B., Roberts, J., Hall, S., Shetter, R., Wert, B., Fired, A., Alicke, B., Stutz, J., Young, V., White, A., and Zamora, R.: OH and HO₂ concentrations, sources, and loss rates during the Southern Oxidants Study in Nashville, Tennessee, summer 1999, *J. Geophys. Res.*, 108, 4617, doi:10.1029/2003JD003551, 2003. 3577
- Nölscher, A. C., Williams, J., Sinha, V., Custer, T., Song, W., Johnson, A. M., Axinte, R., Bozem, H., Fischer, H., Povesle, N., Phillips, G., Crowley, J. N., Rantala, P., Rinne, J., Kulmala, M., Gonzales, D., Valverde-Canossa, J., Vogel, A., Hoffmann, T., Ouwersloot, H. G., Vilà-Guerau de Arellano, J., and Lelieveld, J.: Summertime total OH reactivity measurements from boreal forest during HUMPPA-COPEC 2010, *Atmos. Chem. Phys. Discuss.*, 12, 7419–7452, doi:10.5194/acpd-12-7419-2012, 2012. 3578, 3587
- Sadanaga, Y., Yoshino, A., Watanabe, K., Yoshioka, A., Wakazono, Y., Kanaya, Y., and Kajii, Y.: Development of a measurement system of OH reactivity in the atmosphere by using a laser-induced pump and probe technique, *Rev. Sci. Instrum.*, 75, 2648, doi:10.1063/1.1775311, 2004. 3577, 3578
- Schlosser, E., Brauers, T., Dorn, H.-P., Fuchs, H., Häsel, R., Hofzumahaus, A., Holland, F., Wahner, A., Kanaya, Y., Kajii, Y., Miyamoto, K., Nishida, S., Watanabe, K., Yoshino, A., Kubistin, D., Martinez, M., Rudolf, M., Harder, H., Berresheim, H., Elste, T., Plass-Dülmer, C., Stange, G., and Schurath, U.: Technical Note: Formal blind intercomparison of OH measurements: results from the international campaign HO_xComp, *Atmos. Chem. Phys.*, 9, 7923–7948, doi:10.5194/acp-9-7923-2009, 2009. 3577
- Shirley, T. R., Brune, W. H., Ren, X., Mao, J., Leshner, R., Cardenas, B., Volkamer, R., Molina, L. T., Molina, M. J., Lamb, B., Velasco, E., Jobson, T., and Alexander, M.: Atmospheric oxidation in the Mexico City Metropolitan Area (MCMA) during April 2003, *Atmos. Chem. Phys.*, 6, 2753–2765, doi:10.5194/acp-6-2753-2006, 2006. 3580

3594

- Sinha, V., Williams, J., Crowley, J. N., and Lelieveld, J.: The Comparative Reactivity Method – a new tool to measure total OH Reactivity in ambient air, *Atmos. Chem. Phys.*, 8, 2213–2227, doi:10.5194/acp-8-2213-2008, 2008. 3578, 3580, 3581, 3585
- Sinha, V., Custer, T., Kluepfel, T., and Williams, J.: The effect of relative humidity on the detection of pyrrole by PTR-MS for OH reactivity measurements, *Int. J. Mass Spectrom.*, 282, 108–111, doi:10.1016/j.ijms.2009.02.019, 2009. 3581, 3590
- Sinha, V., Williams, J., Lelieveld, J., Ruuskanen, T., Kajos, M., Patokoski, J., Hellen, H., Hakola, H., Mogensen, D., Boy, M., Rinne, J., and Kulmala, M.: OH reactivity measurements within a boreal forest: evidence for unknown reactive emissions, *Environ. Sci. Technol.*, 44, 6614–6620, doi:10.1021/es101780b, 2010. 3577
- Sinha, V., Williams, J., Diesch, J. M., Drownick, F., Martinez, M., Harder, H., Regelin, E., Kubistin, D., Bozem, H., Hosaynali-Beygi, Z., Fischer, H., Andrés-Hernández, M. D., Kartal, D., Adame, J. A., and Lelieveld, J.: OH reactivity measurements in a coastal location in Southwestern Spain during DOMINO, *Atmos. Chem. Phys. Discuss.*, 12, 4979–5014, doi:10.5194/acpd-12-4979-2012, 2012. 3577, 3578
- Warneke, C., Roberts, J., Veres, P., Gilman, J., Kuster, W., Burling, I., Yokelson, R., and de Gouw, J.: VOC identification and inter-comparison from laboratory biomass burning using PTR-MS and PIT-MS, *Int. J. Mass Spectrom.*, 303, 6–14, doi:10.1016/j.ijms.2010.12.002, 2011. 3591
- White, M. L., Russo, R. S., Zhou, Y., Ambrose, J. L., Haase, K., Frinak, E. K., Varner, R. K., Wingenter, O. W., Mao, H., Talbot, R., and Sive, B. C.: Are biogenic emissions a significant source of summertime atmospheric toluene in the rural Northeastern United States?, *Atmos. Chem. Phys.*, 9, 81–92, doi:10.5194/acp-9-81-2009, 2009. 3591
- Williams, J., Crowley, J., Fischer, H., Harder, H., Martinez, M., Petäjä, T., Rinne, J., Bäck, J., Boy, M., Dal Maso, M., Hakala, J., Kajos, M., Keronen, P., Rantala, P., Aalto, J., Aaltonen, H., Paatero, J., Vesala, T., Hakola, H., Levula, J., Pohja, T., Herrmann, F., Auld, J., Mesarchaki, E., Song, W., Yassaa, N., Nölscher, A., Johnson, A. M., Custer, T., Sinha, V., Thieser, J., Pouvesle, N., Taraborrelli, D., Tang, M. J., Bozem, H., Hosaynali-Beygi, Z., Axinte, R., Oswald, R., Novelli, A., Kubistin, D., Hens, K., Javed, U., Trawny, K., Breitenberger, C., Hidalgo, P. J., Ebben, C. J., Geiger, F. M., Corrigan, A. L., Russell, L. M., Ouwersloot, H. G., Vilà-Guerau de Arellano, J., Ganzeveld, L., Vogel, A., Beck, M., Baylerle, A., Kampf, C. J., Bertelmann, M., Köllner, F., Hoffmann, T., Valverde, J., González, D., Riekkola, M.-L., Kulmala, M., and Lelieveld, J.: The summertime Boreal forest field mea-

3595

surement intensive (HUMPPA-COPEC-2010): an overview of meteorological and chemical influences, *Atmos. Chem. Phys.*, 11, 10599–10618, doi:10.5194/acp-11-10599-2011, 2011. 3587

- Yang, X. and Lu, Y.: Preparation of polypyrrole-coated silver nanoparticles by one-step UV-induced polymerization, *Mater. Lett.*, 59, 2484–2487, doi:10.1016/j.matlet.2005.03.033, 2005. 3584

Table 1. Three basic principles for direct total OH reactivity measurements, the uncertainties, detection limit and time resolution.

	Basic principle	Uncertainty	Detection Limit	Time resolution
Pump-and-probe LIF	Production of artificially high OH with a flash photolysis beam and detection of the OH decay with LIF	10–12 %	$1\text{--}2\text{ s}^{-1}$	30–180 s
Discharge flow tube LIF	Inject high OH levels with a movable inlet and monitor OH with LIF after different reaction times (different inlet positions)	16–25 %	1 s^{-1}	210 s
Comparative Reactivity Method	Monitor the change in a reagents concentration for the reaction of the reagent+OH with and without the presence of atmospheric reactive molecules	16–20 %	$3\text{--}4\text{ s}^{-1}$	10–60 s

3597

Table 2. Detailed comparison of technical, instrumental and operational parameters of PTR-MS and GC-PID

	PTR-MS	GC-PID
Size	650 × 1660 × 550 mm	260 × 160 × 400 mm
Weight	150 kg	8 kg
Power	max. 1500 W	max. 50 W (+ internal battery for ca. 12 h)
Inlet flow	30–300 sccm (continuously, adjustable)	50–250 sccm (not continuously, adjustable)
Interferences/Challenges	changing sensitivity with humidity	changing sensitivity with humidity possible toluene interference
Cost	ca. 180 000 €	ca. 18 000 €
Limit of detection	$3\text{--}4\text{ s}^{-1}$	$3\text{--}6\text{ s}^{-1}$
Uncertainty	16–20 %	25–46 %
Stability	very good over several weeks	decreasing after several weeks
Time resolution – raw	10–60 s	60–70 s
Time resolution – average	1–5 min	5–20 min

3598

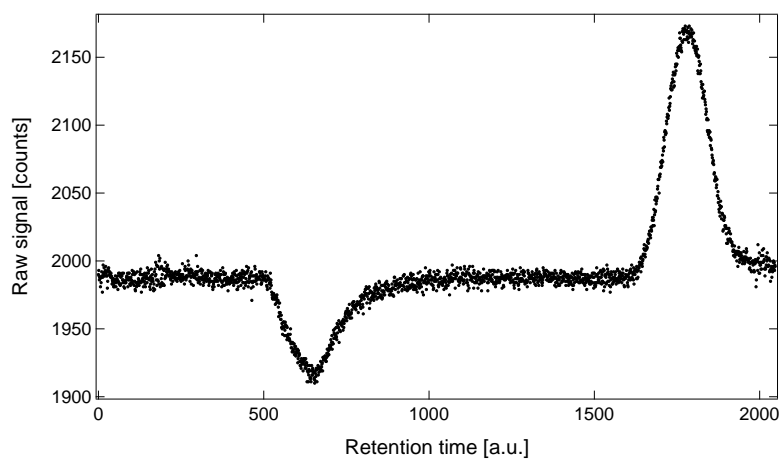


Fig. 1. Typical GC-PID chromatogram of pyrrole in humid air. Pyrrole is detected in a retention window of 1300–2000 a.u. (45–55 s) and needs to be well separated from the water peak (500–1000 a.u.).

3599

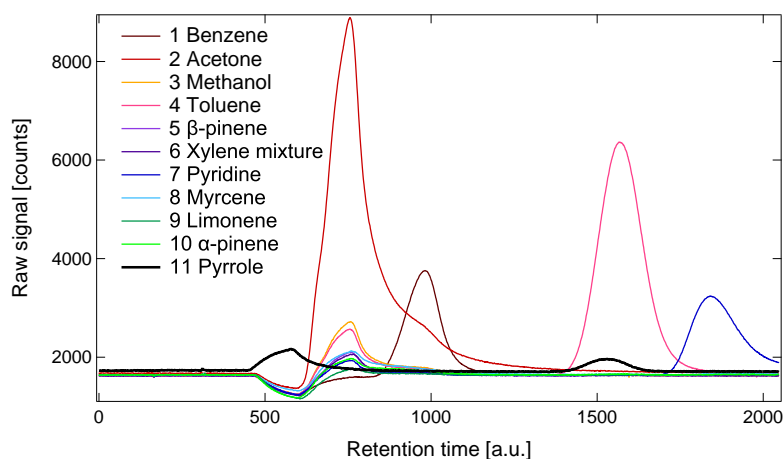


Fig. 2. Ten tested compounds (high ppm levels) for interference on the pyrrole (black: 1300–2000 a.u.) retention time window. Four peaks are identified: acetone (orange: 600–1000 a.u.), benzene (brown: 800–1200 a.u.), toluene (pink: 1300–1800 a.u.) and pyridine (blue: 1700–2050 a.u.). Only toluene was overlapping with the pyrrole retention time window. Chromatograms for substances tested subsequently to acetone show a rest-acetone peak.

3600

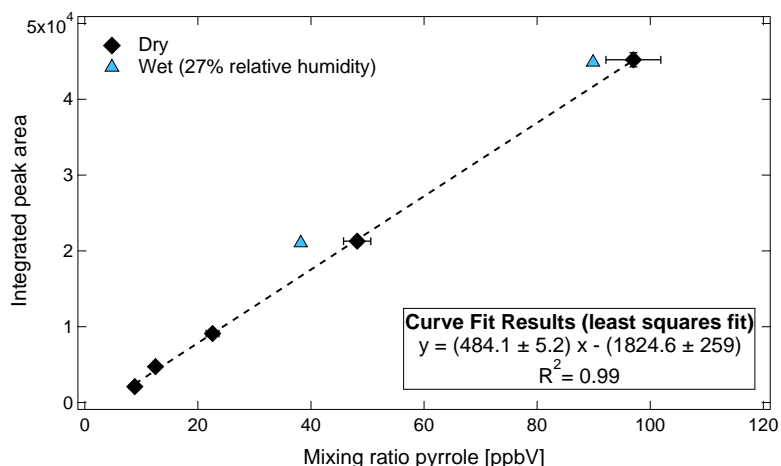


Fig. 3. Calibration plot for pyrrole which was introduced in different mixing ratio levels and detected with the GC-PID. The peak area was monitored and peak area integration averages were used to receive a calibration factor. Standard deviations of the averaged peak areas were less than 4%. Two points (blue) were monitored in humid air and compared to dry results (black).

3601

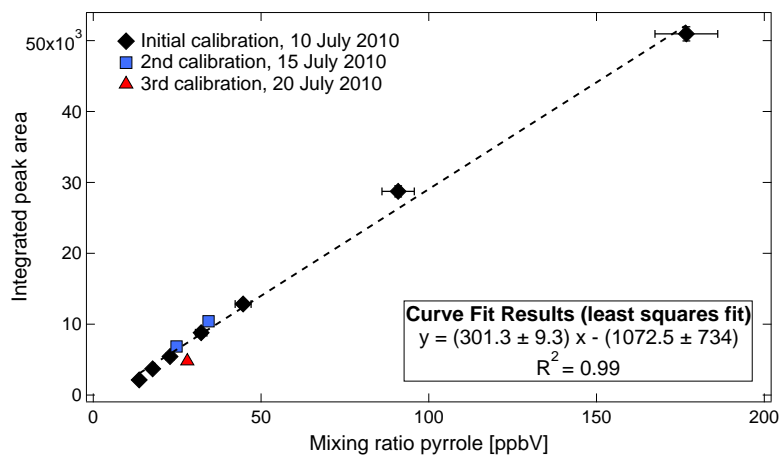


Fig. 4. Three different calibrations for pyrrole within ten days intensive measurements at the HUMPPA-COPEC 2010 field campaign: for optimized conditions at the start of the campaign (black), five days later (blue) and after ten days intensive measurement campaign (red). After five days less than 10% deviation of the first calibration curve could be observed. After ten days sensitivity was decreased by 35%.

3602

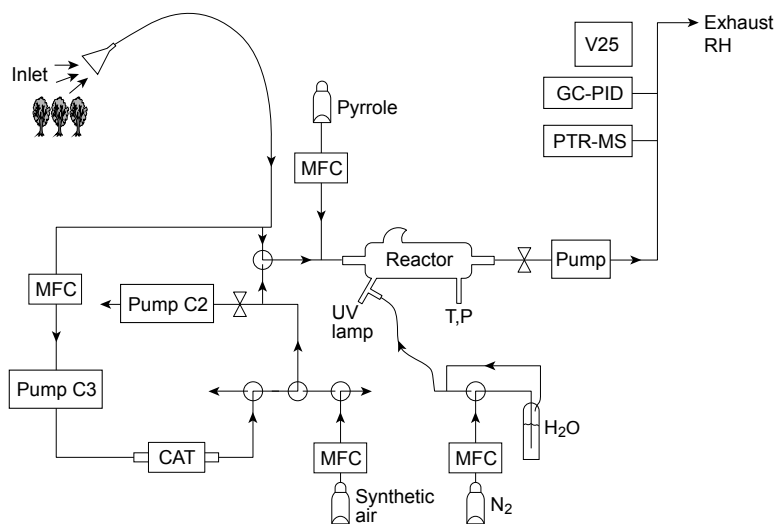


Fig. 5. Schematic of the Comparative Reactivity Method (CRM), as it was set-up for all presented tests and field campaigns. Two detectors (PTR-MS, GC-PID) were probing in parallel the outflow of the reactor. Mass flow controllers (MFC), valves and a catalytic converter (CAT) were operated by a controlling devise V25. This also recorded the measurement positions (C1, C2, C3) as well as temperature (T) and pressure (P) inside the system and relative humidity (RH).

3603

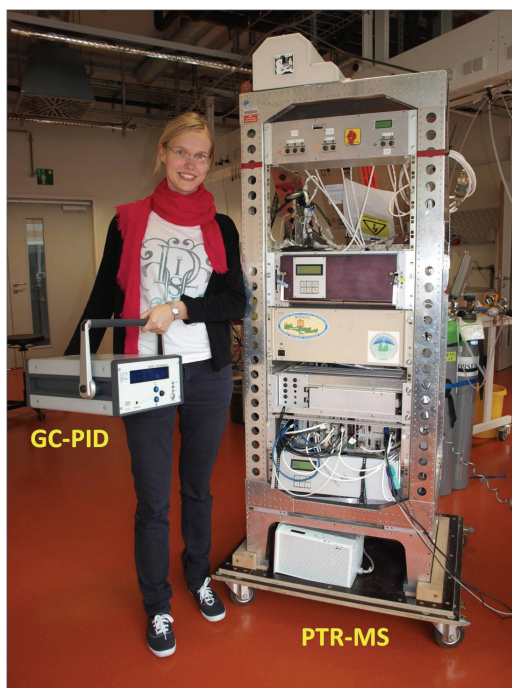


Fig. 6. Two detectors for CRM total OH reactivity measurements: To the right the IONICON PTR-MS, to the left the GC-PID.

3604

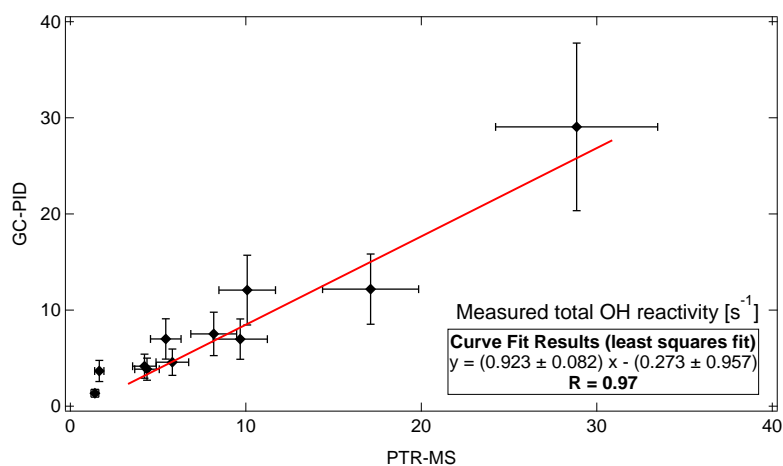


Fig. 7. Correlation plot and linear least squares fit for standard measurements of PTR-MS and GC-PID in parallel as detector for total OH reactivity. As standard gas propane and propene have been introduced into the system in a known amount and the total OH reactivity was detected with both instruments.

3605

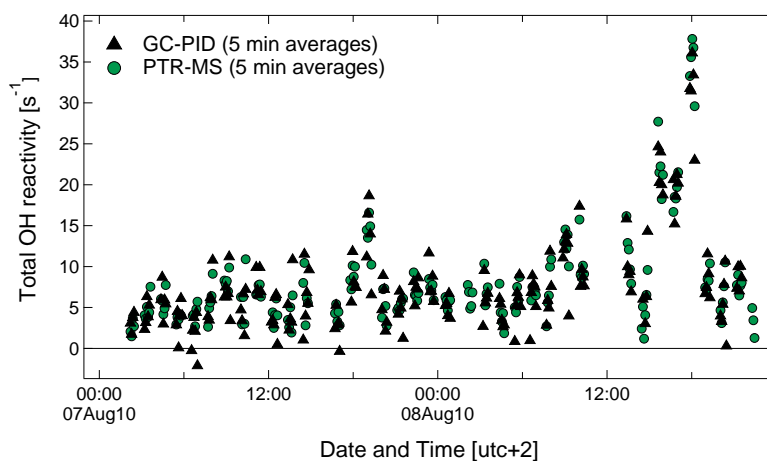


Fig. 8. Direct total OH reactivity measurements within the summertime boreal forest canopy during HUMPPA-COPEC 2010. Both detectors were operated in parallel for CRM, the data was analyzed and averaged to 5 min. PTR-MS (green) and GC-PID (black) show good agreement in a total OH reactivity range from the limit of detection to $40 s^{-1}$.

3606

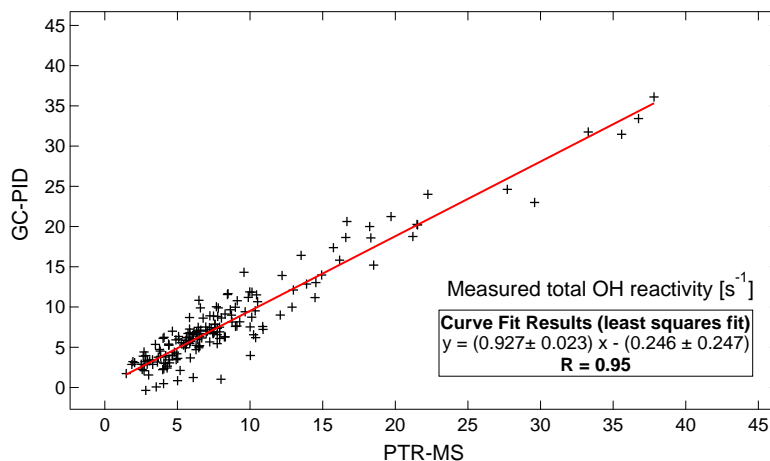


Fig. 9. Correlation of PTR-MS and GC-PID results for summertime boreal forest total OH reactivity during HUMPPA-COPEC 2010. A linear least squares curve fit is given, its slope and the Pearson R of the correlation between the two instruments.

3607

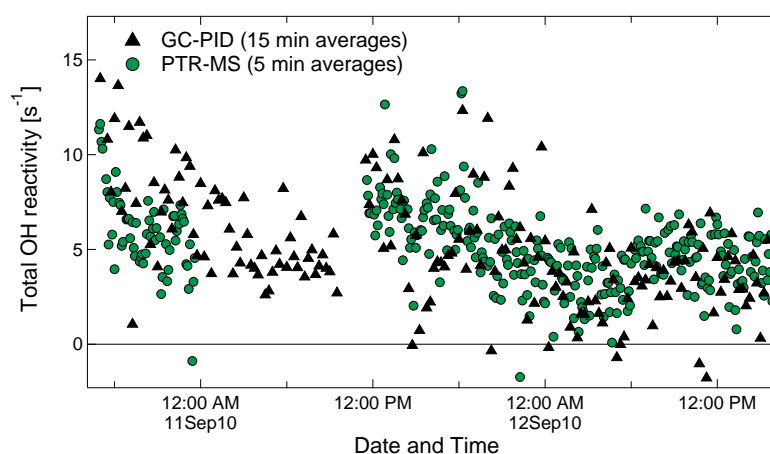


Fig. 10. Direct total OH reactivity measurements in the Jülich Plant Atmospheric Chamber (JPAC) for primary boreal tree emissions. The 15 min averaged results of the GC-PID (black) show the same trend but a higher variability than the PTR-MS (green) 5 min averages.

3608

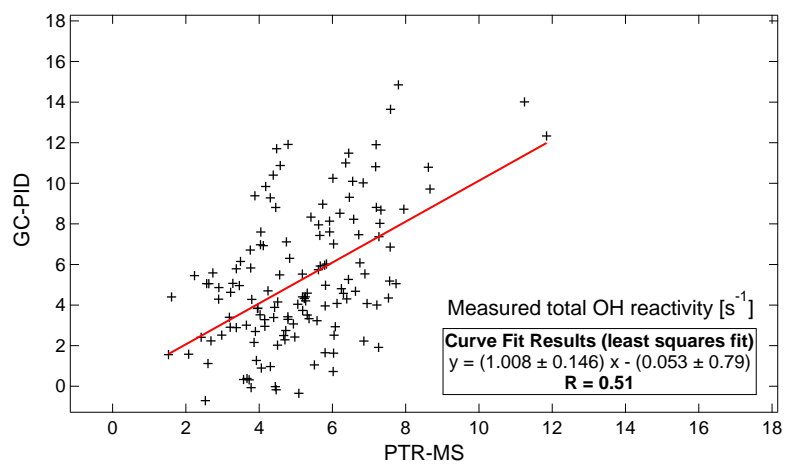


Fig. 11. Correlation of PTR-MS and GC-PID results (15 min averages) for total OH reactivity measured from boreal tree species in the JPAC plant chamber. A linear least squares curve fit, its slope and the quality of the correlation (Pearson R) are given.